

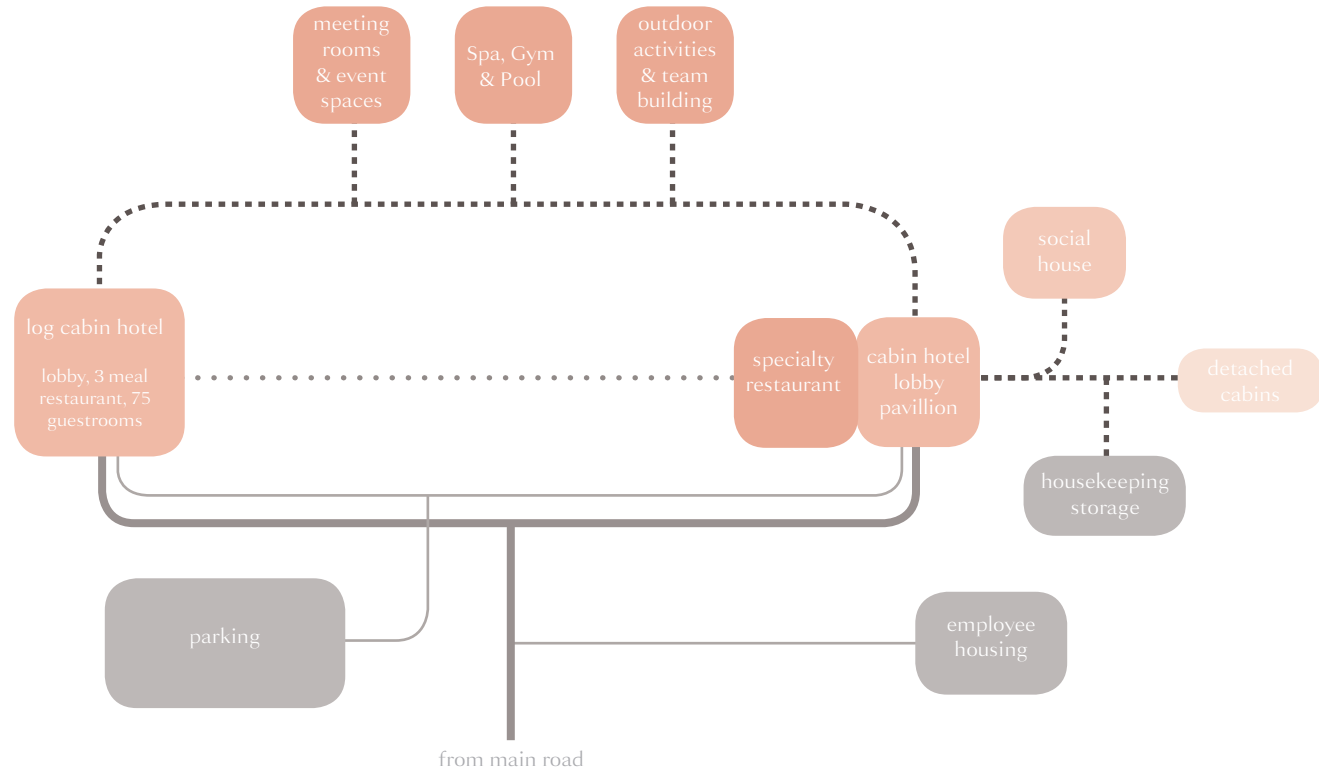
YOSEMITE

resorts & spa



one union studio

- public two way vehicular roadway
- employees only
- - - - electric cars / hotel guests only
- hotel guests only



HOTEL I
CABIN HOTEL

ENTRY SEQUENCE

- approach & signage
- reception pavillion
- hotel transporation
- pathways



Reconnect and refocus on what really matters, in a destination that is in harmony with the natural environment.
Tree-lined, low-lit, meandering main driveway off Route 41 leading to a hilltop reception pavilion.
Elegant and well lit signage at the entry of the driveway will commence the unique hotel experience.



Juxtaposing refined and raw materials, highlighting their natural inherent beauty; clean and simple lines of the reception pavillion, framing the valley vistas for a poignant first impression.
Cars will be required to be valet parked by the friendly staff at the porte cochere. Parking spaces are to be concealed from view from any public areas by heavy landscaping.



Eco-conscious and quiet, our electric cars will transport guests and luggage around the campus. Bicycles will be provided for employees with designated parking areas to moving around the site with ease and efficiency.

X Electric Golf Carts to transport up to 5 people + luggage w/ parking and charging station near reception

X Luggage bicycles





Introducing hard surfaces only when it's needed, pathways and bridges harmoniously blend into the lush landscape. Recommended materials are concrete, hardwood and stone.

RECEPTION PAVILLION

- check in lounge
- concierge
- coffee / tea bar
- retail
- outdoor lounge
- specialty restaurant (shared and open to public)



Check-in experience is seamless, efficient, and a pleasure. Rather than having a centralized desk, guests are warmly greeted by a host and offered to sit anywhere in the reception pavillion. A check-in attendant will come to the guest and take care of check in while guest enjoy a welcome tea.

Seating area should be flexible and open to accomodate 3-4 groups at the same time. Overall, this space is to feel like a calm living room.

A coffee/espresso bar that feels like a beautiful kitchen counter will be part of the lounge space that will serve hot beverages all day.

A low sculptural desk will be dedicated to concierge to answer any questions. Public restrooms for guests will be needed. # of stalls will be based on the final SF and occupancy # of the building. Unisex bathrooms allowed.

BOH office space and a small pantry will need to be part of this pavillion.





Retail is casual but well curated. It does not require a huge foot print and can be a large table with curated items like books, local art, candles and some branded items.





A reflecting pool and fire pit outside the reception pavilion welcomes guests after they check-in. Thought of as a progression from their everyday lives, into our retreat. This can be thought of as a portal or threshold that gives guests a moment of awe and release.

Firepits will be communal and will need to accommodate 2-3 groups at the same time. This is a transient area where guests can lounge and marvel at the views before being whisked away to their rooms in an electric cart.



A specialty restaurant ideally is situated in close proximity to the reception pavillion (as a separate structure directly adjacent to or as a part of the reception pavillion) with an internal connection but be able to be completely closed off from the reception lounge, visually and acoustically.

This restaurant will be open to the public for dinner and can be bought out for special events. Ideal seat count will be from 75-95 seats, outdoor seating excluded.



Minimal and functional. Can be unisex.

SOCIAL HOUSE

- lounge & game room
- bar



The Social House is a separate structure located somewhere between the reception pavillion and guestrooms. For hotel guests only, it is a cozy and relaxing compound with comfortable sofas and chairs by a fireplace. Also host to an outdoor firepit, a bar, and gameroom, it is a congregational place to mingle. The interior lounge space will need to be able to accomodate 15-20 people with at least 10 bar seats around the liquor bar. Unisex restroom for guests must be provided.



Anchor to the Social House is a moody bar. With a strong connection to the outdoors, this will serve as the main bar with an emphasis on artisanal cocktails, this area can be bought out for unique events.

DETACHED CABINS

- 50 cabins
- 350 sf/ cabin



Cabin living nestled in the hills overlooking the Yosemite National Park.
Book a group retreat, participate in a wellness program, or do nothing but enjoy the meditative peace of nature while you explore the National Parks.





Pre-fabricated cabins are nestled into the woods. Structure should resemble large scale modern sculptures dotting the landscape from afar.

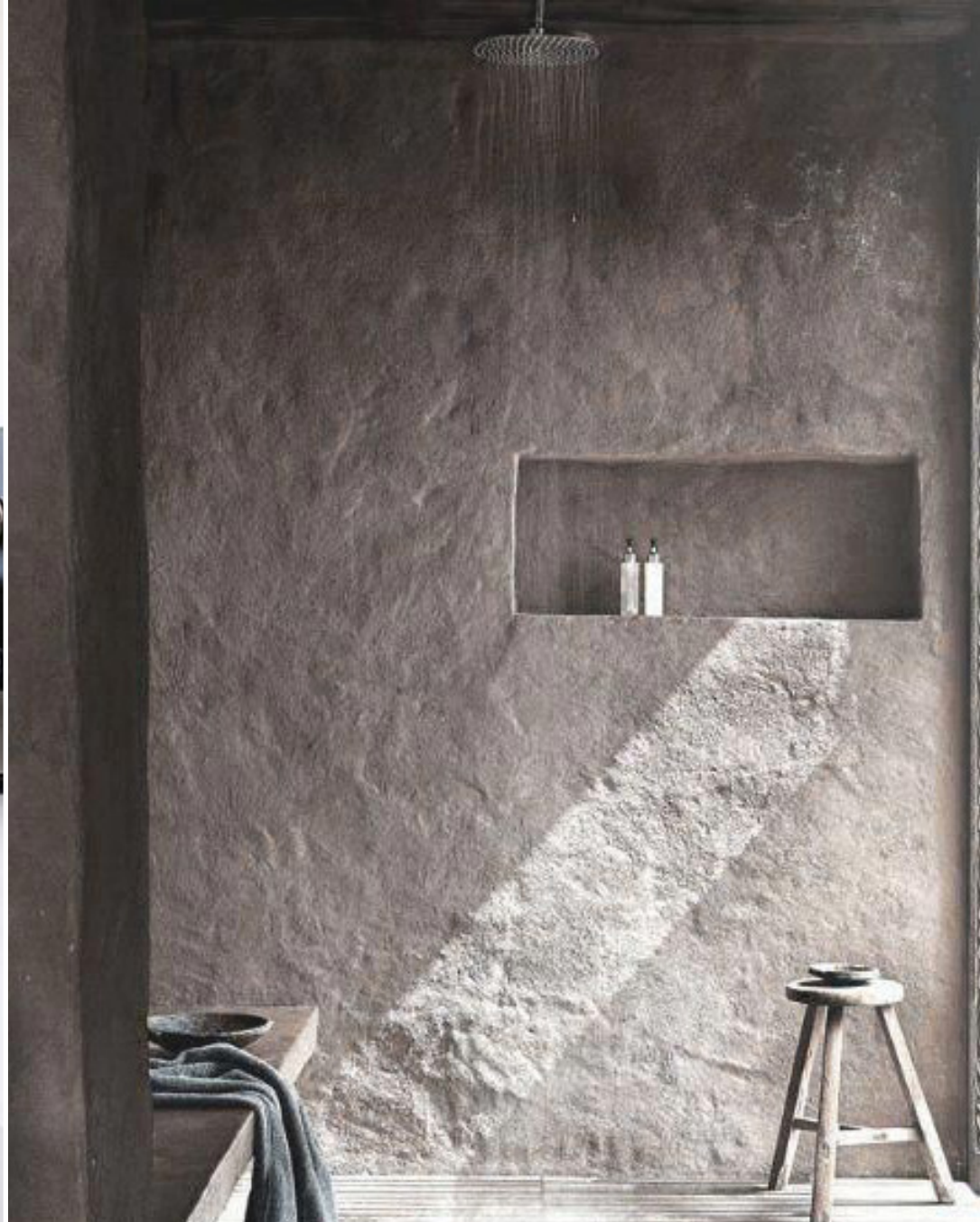
- 50 single story +/- 300 sq.ft. units
- 2-3 occupancy
- lit room signs
- key card access



Rustic yet refined. Minimal but warm.

- king bed
- closet
- minibar + wet bar
- 4 fixture bathrooms (shower, 2 sinks, toilet)

- operable glass door to private outdoor space
- sheer & blackout



Textured finishes with utilitarian fixtures. Wood accent furniture.

- 4 fixture bathroom (shower, 2 sinks, toilet)



Private outdoors areas are outfitted with either a jacuzzi or a firepit with lounge furniture.

HOTEL II
THE LOG CABIN

THE LOG CABIN

- 75 Guestrooms
- 550 sf typ rooms
- 700 sf suites
- lobby
- 3 meal restaurant (shared)
- meeting room (shared)



Redefining the 'Cabin in the Woods'. A large building encompassing a restaurant and sleeping quarters.



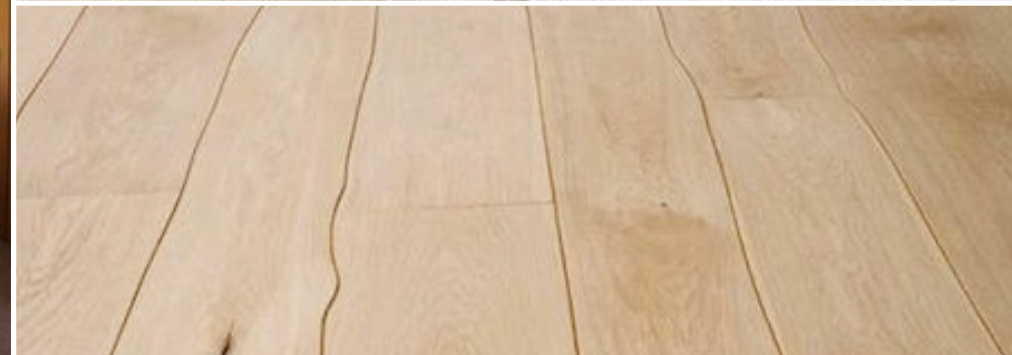


Warm and soulful. Minimalist take on the log cabin typology.



Serving 3-meal periods, the focus will be on healthy eating in an approachable format (bright and friendly).





Unpretentious decor with a hand-made feel to everything. Crafty with a bit of sophistication.



Simplicity in the guest bathroom.
Strong natural light with an open connection to the outdoors, clean lines with the occasional unique organic object.

HOTEL III
GLAMPING



Only available during the peak summer seasons.

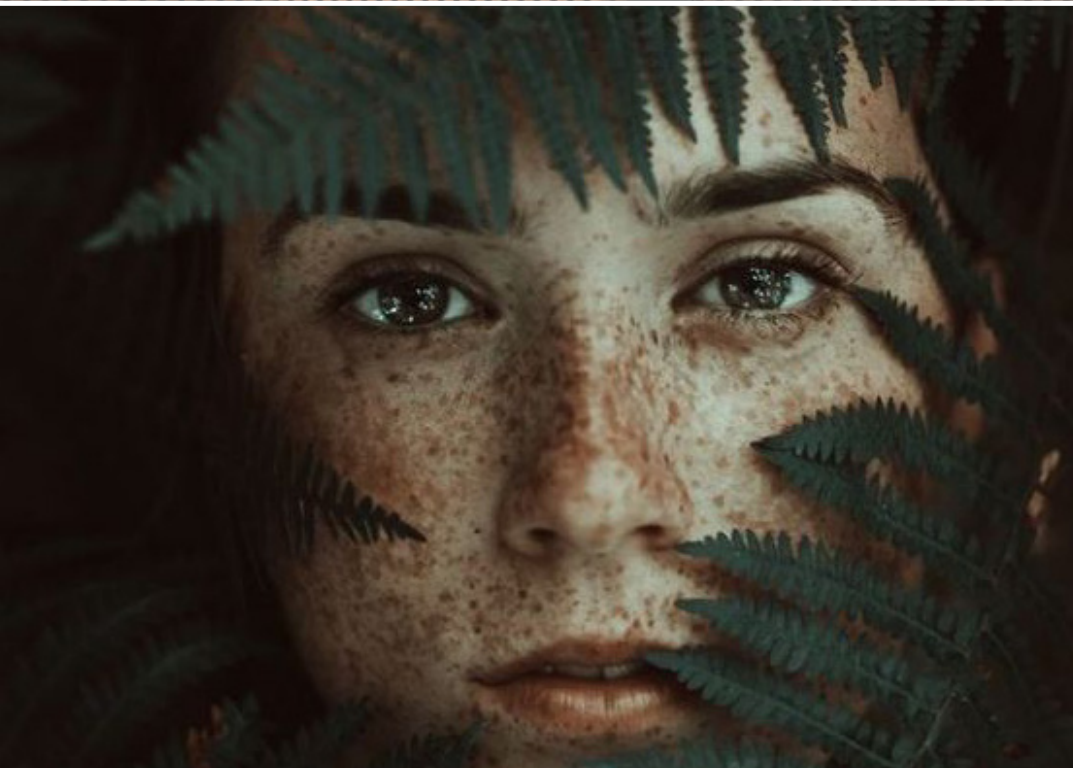
- 5-10 teak tent platforms for +/- 150 sq.ft. tents
- 2 occupancy
- heated king bed
- small ext. deck living
- animal safe minibar refrigerator
- picnic table
- fire pit

SHARED AMENITIES

- wellness center
- team building facility
- meeting rooms

SPA & WELLNESS

- spa
- yoga studio
- fitness club
- juice bar
- heated pool



Awaken the senses with a textured, muted approach to the Spa. Seated relaxation area for guests, based on the guiding principals of natural ingredients in helping guests to reconnect with the inner self.





Calm the mind, quiet the body with clean lines and simple design of interior changing room and relaxation area.

- water bar/ hydration station
- Tea service
- Women/Mens changing
 - 3 showers
 - 4 toilets
 - 4 sinks
 - 25 lockers





8-10 treatment rooms (2 en suite with showers)
interior herb garden for treatment rooms



Co-ed Steam, Sauna, and Hammam each highlighting the craft of materials.

gym 700-1,000sq.ft.
5 treadmills
3-5 elliptical
5 bike
kettle bell rack
stretching area

yoga/meditation studio 700 sq.ft.
900 sq.ft. outdoor space for yoga

Sports Art eco-powr equipment
74% of the energy generated during work-
outs and feed it back to the grid to offset
consumption and provide an extra level of
motivation.





Spa Adjacent Tea/Food Service

- bar counter w. kombucha on tap, smoothie stations
- 20 seat capacity

- grab and go merchdiser for fresh juices & bowls
- vegan





- 1x ext. heated infinity pool (for swimming)
- 1x int. pool (can be part of the spa wet areas)

MEETING & TEAM BUILDING

- prefunction
- meeting rooms
- outdoor team building facility



Pre-function space is where people gather before heading into the meeting room. It should have the following

- free standing bar counter with sink
- flexible lounge furniture
- W.C.



Breakout and meeting rooms for smaller use should house:

- built in TV
- video conferencing capabilities
- acoustical walls

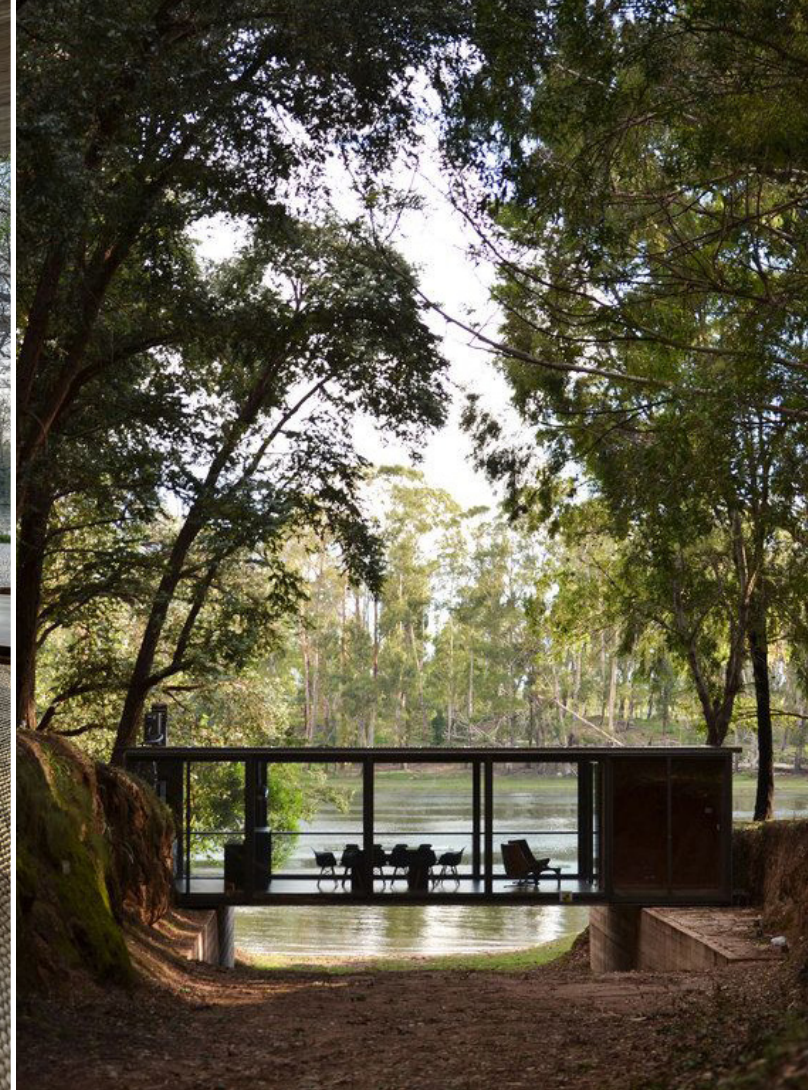


- flexible lighting set up
- built in av closet
- charging stations



Outdoor Meeting Amphitheater and Team Building Room focus is on integration into the site.

xxx sq.ft.
restrooms



Year-round outdoor team building programs, activities and obstacle course.



Spring Adventures

- art packages
- wine tasting
- fly fishing
- mushroom walks
- birding (guided bird walks)
- challenge courses

Summer Adventures

- hiking
- biking
- guided property walks
- tubing/canoeing

Autumn Adventures

- archery
- guided nature hikes
- fly fishing
- equestrian excursions

Winter Adventures

- skiing / snowboarding
- ice skating
- snow tubing

Year Round

- scavenger hunts
- wilderness survival challenge
- ultimate game of hide & seek
- low rope courses



PUBLIC ART



Large-scale, nature inspired installations interspersed throughout the campus.

BOH



An eco-forward, creative use of sustainable technology and practices should be thoughtfully integrated into the design.

BOH KITCHEN

- IRD / 3 meal kitchen
- specialty restaurant kitchen
- banquet kitchen



xxxx sq.ft. back of house kitchen serving IRD, employees and F&B outlets.
Banquet kitchen near meeting rooms. TBD by Kitchen Consultant and Ops.



OFFICES

- Employee office & work stations
- meeting rooms



- xxx sq.ft. bright office
- private offices for the GM, HR and Director Level employees
- employee restrooms
- 1 conference room



LOCKER ROOMS

- women's locker room
- men's locker room



- Women & Men's Employee xxx unit, xxx sq.ft.
- xx toilets
- xx sinks
- xx shower



EMPLOYEE DINING

- kitchen
- canteen



- xxx sq.ft. employee dining
- buffet
- employee kitchen
- trash/compost/recycling



- television
- loose tables
- counter height seats



EMPLOYEE HOUSING

- studio
- 1 bedroom



- 30 housing units total @ +/- 500 sq.ft. per unit
- 1-2 occupancy
- Twin/Queen beds
- Kitchenette w/ refrigerator, induction stove and microwave

- simple finish bathroom w/ shower
- living room
- closet



1. VIVOOD Landscape Hotel <https://www.vivood.com/en/>
2. Ventana Big Sur <https://www.ventanabigsur.com/>
3. Post Ranch Inn <https://www.postranchinn.com/>
4. 1440 MULTIVERSITY <https://1440.org/>
5. Reguvia Spa & Wellness Resort Hotel <https://www.behance.net/gallery/58939557/Revugia-Spa-Wellness-Resort-Hotel>
6. AUTOCAMP <https://autocamp.com/gallery/>
7. GetawayHouse <https://getaway.house/>
8. Sports Art Eco-Powr <https://www.gosportsart.com/eco-powr-old/>



THANK YOU



oneunionstudio.com